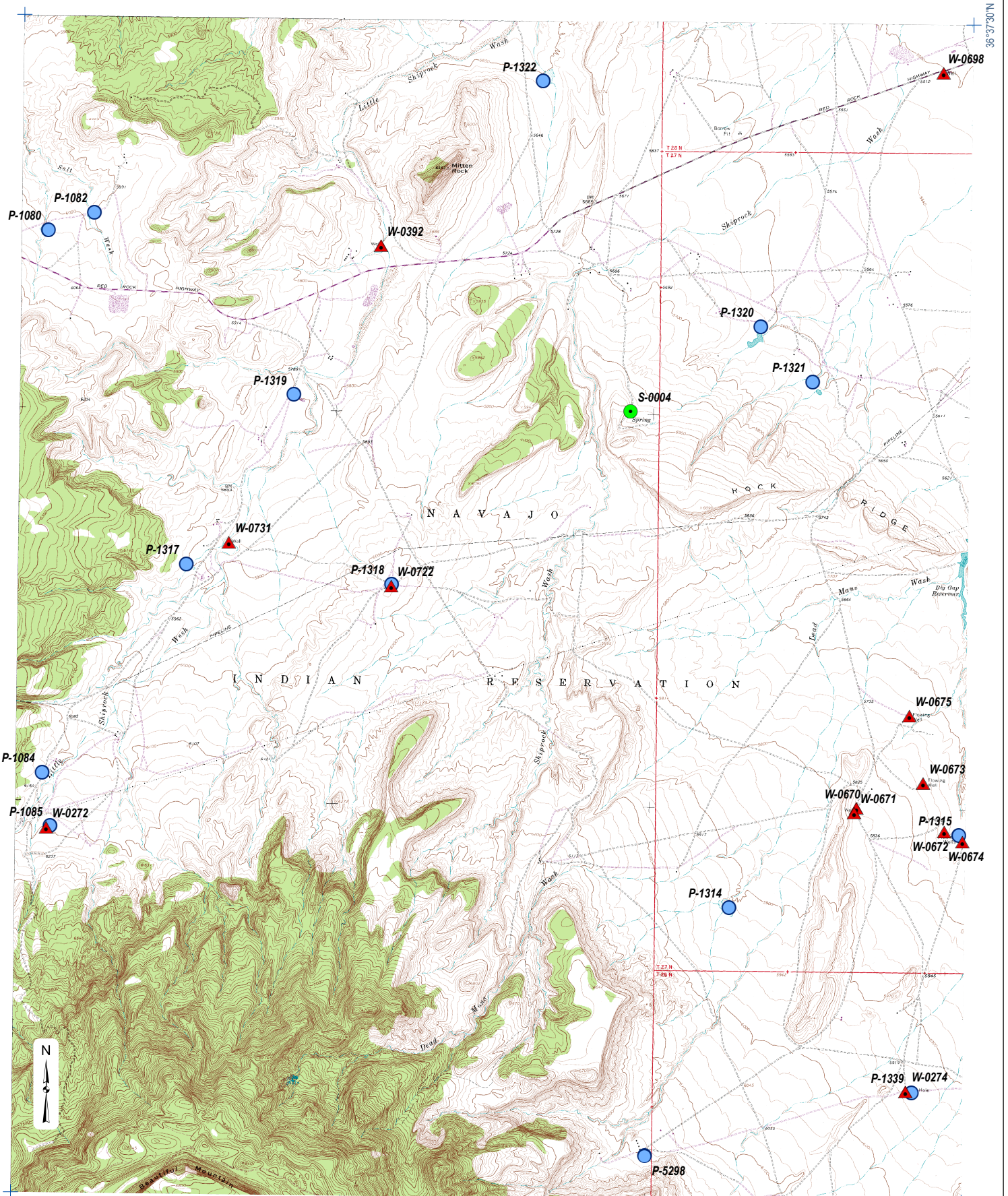


109°00'W


108°52'30"W

36°37'30"N



36°30'0"N


109°00'W

 San Juan River Basin Boundary

0 0.5 1 Miles

108°52'30"W

-  Impoundment
-  Spring
-  Well

Land Status
 Navajo Trust
 Lands, NM

**KELLER-BLIESNER
 ENGINEERING, LLC**
 LOGAN, UTAH

Prepared for: U.S. Dept of Justice
 U.S. Dept of the Interior
 BIA - Albuquerque Area Office

**San Juan River Basin
 Navajo Water Use Survey**

**Mitten Rock
 36108-E8**