

108°45'0"W

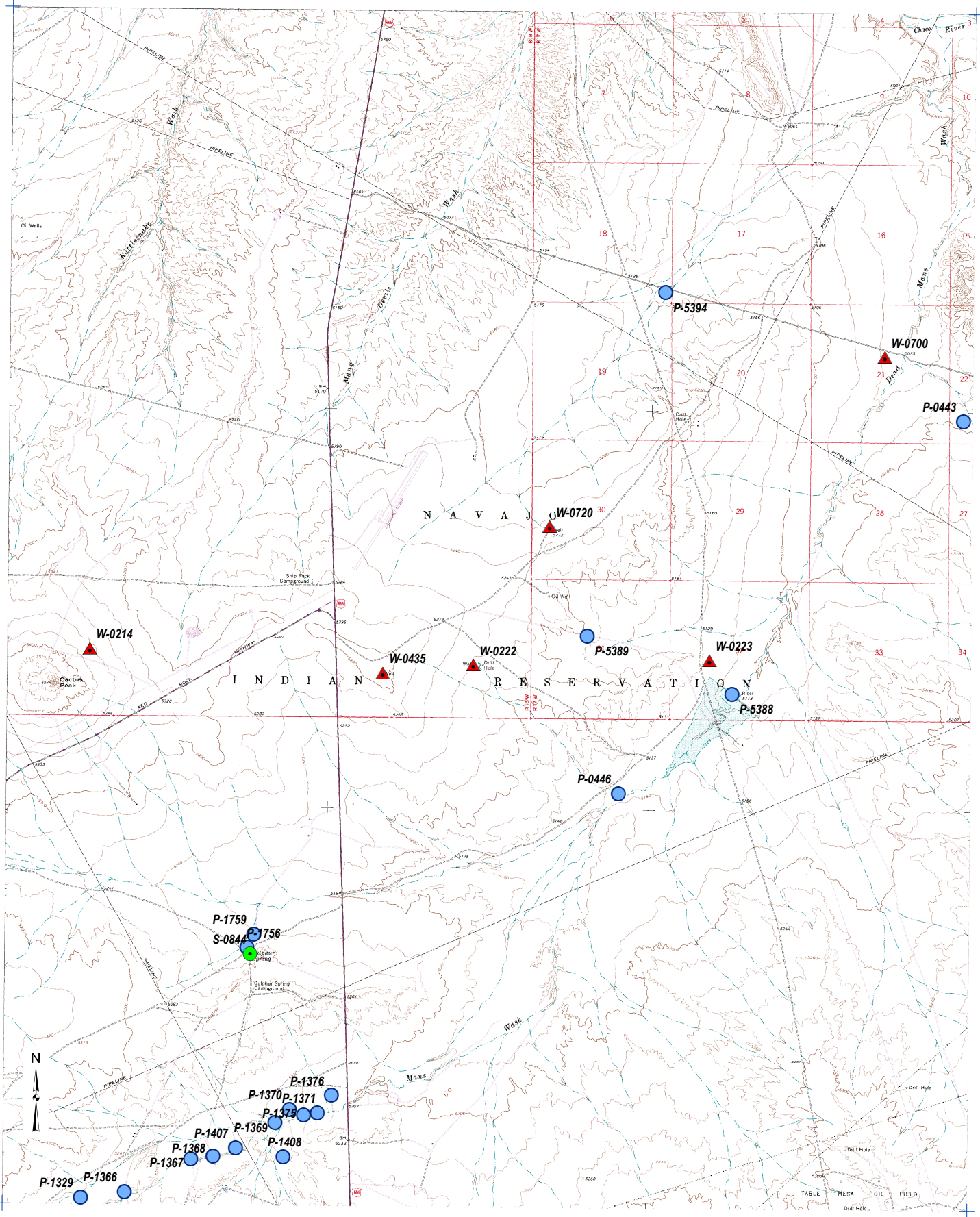
108°37'30"W


36°45'0"N

36°37'30"N

108°45'0"W


108°37'30"W



 San Juan River Basin Boundary

0 0.5 1 Miles

-  Impoundment
-  Spring
-  Well

Land Status
 Navajo Trust
 Lands, NM

**KELLER-BLIESNER
 ENGINEERING, LLC**
 LOGAN, UTAH

Prepared for: U.S. Dept of Justice
 U.S. Dept of the Interior
 BIA - Albuquerque Area Office

**San Juan River Basin
 Navajo Water Use Survey**

**Sulphur Spring
 36108-F6**